

4

3

2

1


B

B

A

A

УКАЗАТЕЛЬ ДОКУМЕНТОВ		
Список чертежей/версия	141951-0	A
Блок – схема	141951-1	A
Полевой блок	141951-2	A
Газовая схема	141951-3	A
Схема внешних подключений	141951-4	A
Схема внутренних подключений	141951-5	A

A		ORIGINAL ISSUE/AS BUILT		02/27/07	JMS
REV	DESCRIPTION			DATE	DRAWN
<small>WARNING: ANY DEVIATION FROM THE RECOMMENDED INSTALLATION PRACTICES SHOWN ON THIS SALES ORDER MUST BE APPROVED IN WRITING BY AMETEK P&amp;AI DIVISION, SUCH DEVIATION MAY VOID SYSTEMS WARRANTY.</small>					
DRAWN:	JMS	02/27/07	 AMETEK PROCESS & ANALYTICAL INSTRUMENTS DIV. NEWARK, DE 19702		
APPROVED:	JJH	02/28/07			
APPROVED:	NYS	02/28/07			
P.O.: D3004-AS-35-GPR/06					
J.O.: 141951					
S/N: 305B800					
TAG: N/A					
SCALE: NONE		SHEET: 1 OF 1			
<input checked="" type="checkbox"/> FOR INFORMATION	PRODUCT LINE		SIZE	DRAWING NO.	REV.
<input type="checkbox"/> FOR APPROVAL	MOISTURE		A3	141951-0	A
<input type="checkbox"/> FINAL "AS-BUILT"		FILE NAME: 141951-0.DWG			

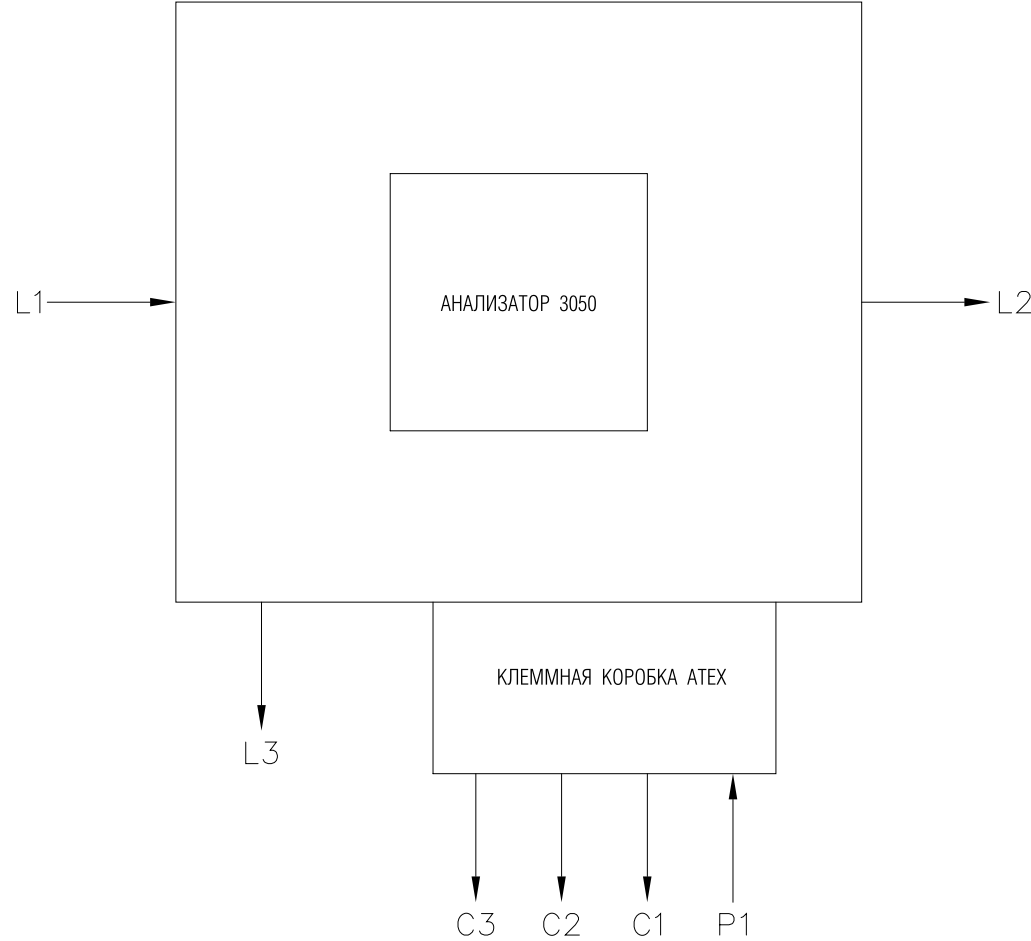
4

3

2

1

3050 – OLV ПОЛЕВОЙ БЛОК



ОТВЕТСТВЕННОСТЬ ЗАКАЗЧИКА

ЛИНИЯ ОТБОРА/ВОЗВРАТА  
 L1 ВХОД ПРОБЫ (цифры оставляем)  
 L2 ВЫХОД ПРОБЫ  
 L3 ДРЕНАЖ, НА АТМОСФЕРУ

КАБЕЛЬ

C1 АНАЛОГОВЫЙ ВЫХОД  
 C2 РЕЛЕЙНЫЕ ВЫХОДЫ (СИГНАЛИЗАЦИЯ)  
 C3 ИНТЕРФЕЙС RS-485

ЭЛЕКТРОПИТАНИЕ

P1 СЕТЬ, 240 В 50/60 Гц, 150 Вт

КОНФИГУРАЦИЯ СИСТЕМЫ

ГЕНЕРАТОР ВЛАЖНОСТИ: 50 PPMV  
 СЕПАРАТОР ГАЗ/ЖИДКОСТЬ

МАРКИРОВКА

ATEX II2G EEx de IICT6

A		ORIGINAL ISSUE/AS BUILT		02/27/07	JMS
REV	DESCRIPTION			DATE	DRAWN
<small>WARNING: ANY DEVIATION FROM THE RECOMMENDED INSTALLATION PRACTICES SHOWN ON THIS SALES ORDER MUST BE APPROVED IN WRITING BY AMETEK P&amp;AI DIVISION, SUCH DEVIATION MAY VOID SYSTEMS WARRANTY.</small>					
DRAWN:	JMS	02/27/07	AMETEK PROCESS & ANALYTICAL INSTRUMENTS DIV. NEWARK, DE 19702		
APPROVED:	JJH	02/28/07			
APPROVED:	NYS	02/28/07			
P.O.: D3004-AS-35-GPR/06					
J.O.: 141951					
S/N: 305B800					
TAG: N/A					
SCALE: NONE		SHEET: 1 OF 1			
<input checked="" type="checkbox"/> FOR INFORMATION	PRODUCT LINE		SIZE	DRAWING NO.	REV.
<input type="checkbox"/> FOR APPROVAL	MOISTURE		A3	141951-1	A
<input type="checkbox"/> FINAL "AS-BUILT"	FILE NAME: 141951-1.DWG				

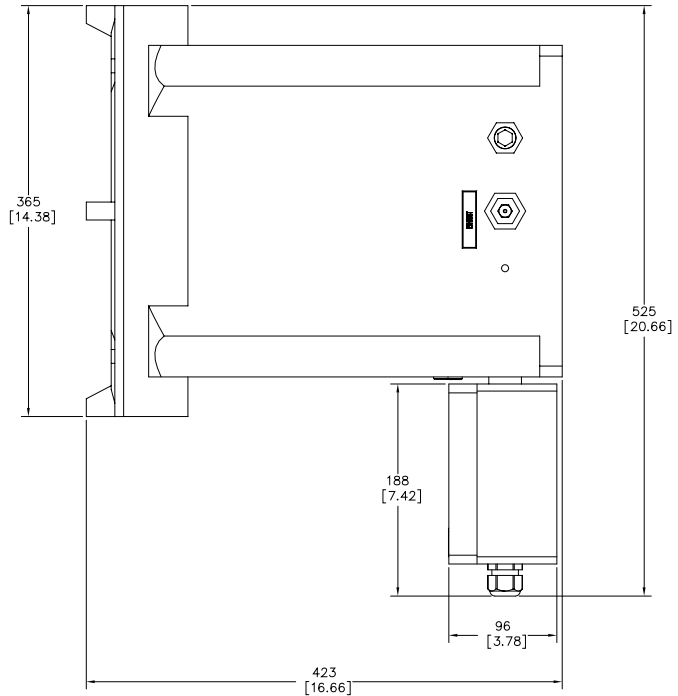
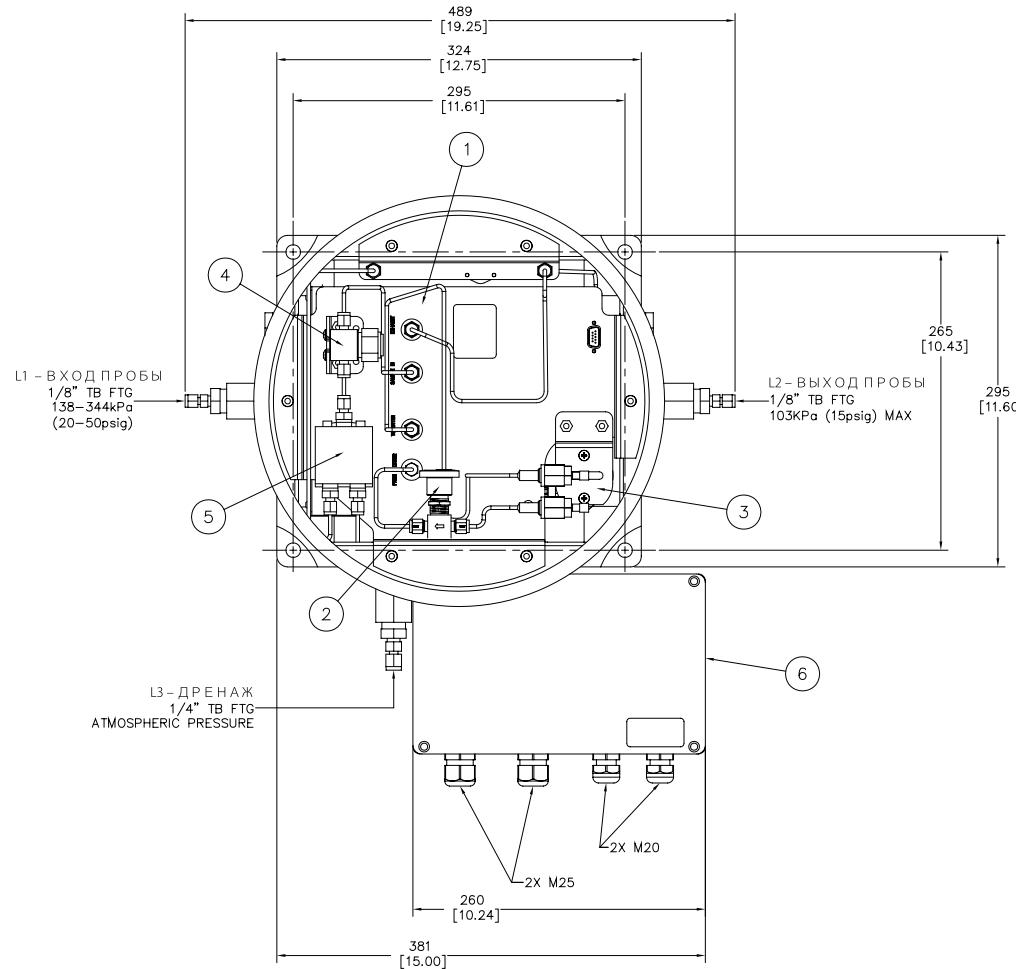
4

3

2

1

No	P/N	K-BO	ОПИСАНИЕ
1	305521901	1	АНАЛИЗАТОР 3050-OLV
2	269895002	1	ОТСЕЧНОЙ КРАН ОСУШИТЕЛЯ
3	305400901S	1	ОСУШИТЕЛЬ
4	305448902S	1	ФИЛЬТР 2 мкм
5	305412901	1	СЕПАРАТОР ГАЗ/ЖИДКОСТЬ
6	305420901	1	КЛЕММНАЯ КОРОБКА



- NOTES:
1. XXX DIMENSIONS ARE mm, [XXX] DIMENSIONS ARE INCHES.
  2. FRONT VIEW SHOWN WITH LID REMOVED.
  3. ENCLOSURE MATERIAL: CAST ALUMINUM
  4. ELECTRICAL CLASS: ATEX EEx d,e IIC T6

REV	DESCRIPTION	DATE	DRAWN
A	ORIGINAL ISSUE/AS BUILT	02/27/07	JMS
<p>WARNING: ANY DEVIATION FROM THE RECOMMENDED INSTALLATION PRACTICES SHOWN ON THIS SALES ORDER MUST BE APPROVED IN WRITING BY AMETEK P&amp;AI DIVISION, SUCH DEVIATION MAY VOID SYSTEMS WARRANTY.</p>			
DRAWN:	JMS 02/27/07	 AMETEK PROCESS & ANALYTICAL INSTRUMENTS DIV. NEWARK, DE 19702	
APPROVED:	JJH 02/28/07		
APPROVED:	NYS 02/28/07		
P.O.: D3004-AS-35-GPR/06			
J.O.: 141951			
S/N: 305B800			
TAG: N/A			
SCALE: NONE		SHEET: 1 OF 1	
<input checked="" type="checkbox"/> FOR INFORMATION <input type="checkbox"/> FOR APPROVAL <input type="checkbox"/> FINAL "AS-BUILT"		PRODUCT LINE MOISTURE	SIZE A3
		DRAWING NO.	REV.
		141951-2	A
FILE NAME: 141951-2.DWG			

4

3

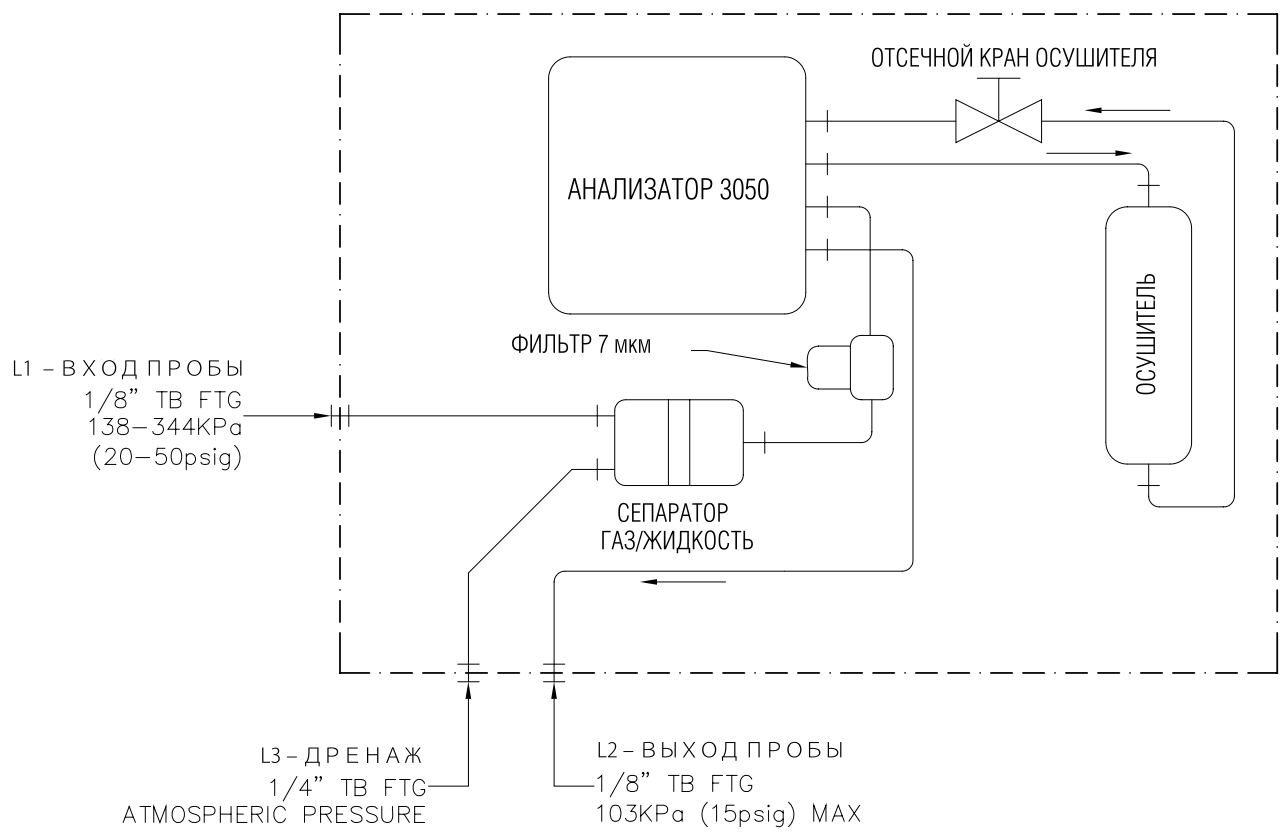
2


1

4 3 2 1

B  
A

B  
A



A		ORIGINAL ISSUE/AS BUILT		02/27/07	JMS
REV	DESCRIPTION			DATE	DRAWN
<small>WARNING: ANY DEVIATION FROM THE RECOMMENDED INSTALLATION PRACTICES SHOWN ON THIS SALES ORDER MUST BE APPROVED IN WRITING BY AMETEK P&amp;AI DIVISION, SUCH DEVIATION MAY VOID SYSTEMS WARRANTY.</small>					
DRAWN:	JMS	02/27/07	 <b>AMETEK</b> <small>PROCESS &amp; ANALYTICAL INSTRUMENTS DIV.          NEWARK, DE 19702</small>		
APPROVED:	JJH	02/28/07			
APPROVED:	NYS	02/28/07			
P.O.: D3004-AS-35-GPR/06					
J.O.: 141951					
S/N: 305B800					
TAG: N/A					
SCALE: NONE		SHEET: 1 OF 1			
<input checked="" type="checkbox"/> FOR INFORMATION	PRODUCT LINE		SIZE	DRAWING NO.	REV.
<input type="checkbox"/> FOR APPROVAL	MOISTURE		A3	141951-3	A
<input type="checkbox"/> FINAL "AS-BUILT"	FILE NAME: 141951-3.DWG				

4 3 2 1

4

3

2

1

## ZONE 1 КЛЕММНАЯ КОРОБКА

TB4

PE	GND	PE
29	○	29
29	○	29
28	○	28
28	○	28
25	○	25
25	○	25
24	○	24
24	○	24
PE	GND	PE
PE	GND	PE
12		12
11		11
10		10
9		9
8		8
7		7
6		6
5		5
4		4
3		3
2		2
1		1
PE	GND	PE
PE	GND	PE
N	○	N
N	○	N
20	○	20
20	○	20
L1	○	L1
L1	○	L1
L1	○	L1
PE	GND	PE

## C3, ИНТЕРФЕЙС RS-485

C3, RS-485 COMMUNICATION SIGNAL  
4 WIRE, 0.50<sup>2</sup> (22AWG) SHLD  
SEE NOTES 6-8

TX(-) OUT  
TX(+) OUT  
RX(-) OUT  
RX(+) OUT

## C2, РЕЛЕЙНЫЕ ВЫХОДЫ

2 WIRE, 0.75mm<sup>2</sup> (20AWG) SHLD  
SEE NOTES 6 & 7

DATA VALID ALARM  
DATA VALID ALARM  
CONCENTRATION ALARM  
CONCENTRATION ALARM  
SYSTEM ALARM  
SYSTEM ALARM

## C1, АНАЛОГОВЫЙ ВЫХОД

2 WIRE, 0.75mm<sup>2</sup> (20AWG) SHLD  
SEE NOTES 6 & 7

4-20mA(-)  
ISOLATED 24VDC COMMON  
ISOLATED 24VDC (+)  
4-20mA(+)  
PRESSURE TRANSMITTER IN(-)  
PRESSURE TRANSMITTER IN(+)

## P1, ЭЛЕКТРОПИТАНИЕ

240VAC, 50/60Hz, 150W  
SEE NOTES 1, 2, 4 & 5

N (LINE NEUTRAL)  
L (LINE HOT)  
GND/PE

## NOTES:

- WARNING: BEFORE APPLYING POWER, VERIFY VOLTAGE REQUIREMENTS. POWER APPLIED TO INCORRECT TERMINALS CAN DAMAGE EQUIPMENT OR CREATE A SAFETY HAZARD.
- ALL POWER INPUT CONNECTIONS ARE TO BE FROM CUSTOMER SUPPLIED DISCONNECT SWITCH.
- INTERCONNECTING CABLES ARE TO BE SUPPLIED AND INSTALLED BY CUSTOMER, UNLESS OTHERWISE SPECIFIED ON SALES ORDER.
- POWER AND SIGNAL CABLES SHOULD BE RUN IN SEPARATE CONDUITS.
- POWER STATED IS ACTUAL LOAD FOR CIRCUIT. SIZE CIRCUIT BREAKER, DISCONNECT SWITCH, AND WIRE GAUGE ACCORDING TO NEC OR LOCAL CODES FOR CUSTOMER SPECIFIC INSTALLATION.
- GROUND CABLE SHIELDS AT BOTH ENDS TO GROUND STUDS, GROUND TERMINALS, OR GROUNDING RINGS. KEEP SHIELD WIRE LESS THAN 2" LONG.
- 100% FOIL, ARMOR CAN BE SUBSTITUTED, IS REQUIRED.
- FOR DAISY CHAINING INSTRUCTIONS, PLEASE REFER TO THE INSTALLATION SECTION OF THE MANUAL.

REV	DESCRIPTION	DATE	DRAWN
A	ORIGINAL ISSUE/AS BUILT	02/27/07	JMS
REV	DESCRIPTION	DATE	DRAWN
WARNING: ANY DEVIATION FROM THE RECOMMENDED INSTALLATION PRACTICES SHOWN ON THIS SALES ORDER MUST BE APPROVED IN WRITING BY AMETEK P&AI DIVISION, SUCH DEVIATION MAY VOID SYSTEMS WARRANTY.			
DRAWN:	JMS	02/27/07	
APPROVED:	JH	02/28/07	
APPROVED:	NYS	02/28/07	
<b>AMETEK</b> AMETEK PROCESS & ANALYTICAL INSTRUMENTS DIV. PROCESS & ANALYTICAL INSTRUMENTS DIVISION NEWARK, DE 19702			
P.O.: 05004-AS-35-GPR/06 J.O.: 141951 S/N: 305B800 TAG: N/A			
SCALE: NONE SHEET: 1 OF 1		<b>ARTVIK/ 3050 - OLV ATEX</b> <b>СХЕМА ВНЕШНИХ ПОДКЛЮЧЕНИЙ</b>	
<input checked="" type="checkbox"/> FOR INFORMATION <input type="checkbox"/> FOR APPROVAL <input type="checkbox"/> FINAL "AS-BUILT"	PRODUCT LINE MOISTURE	SIZE A3	DRAWING NO. 141951-4
FILE NAME: 141951-4.DWG			REV. A

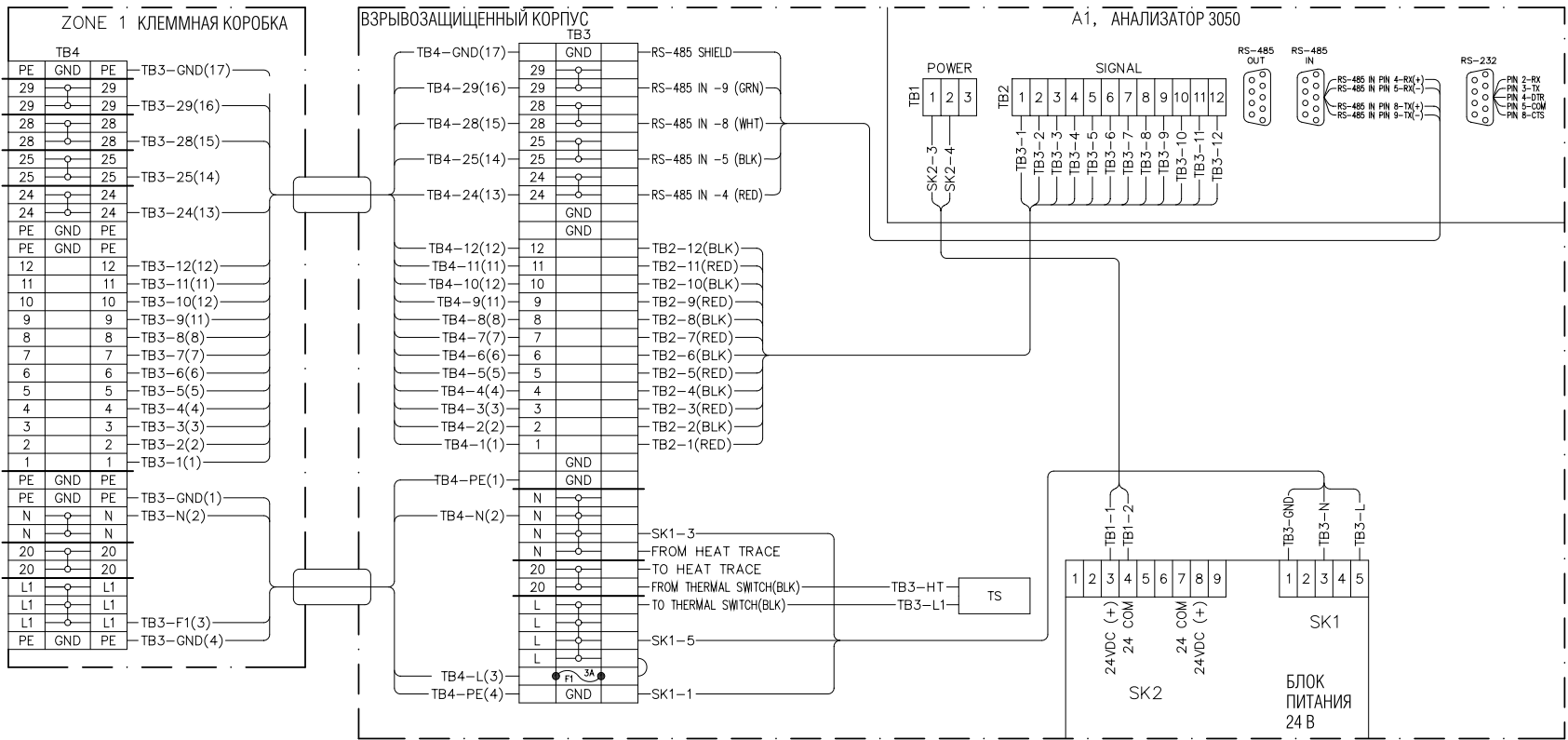
4

3

2

1

4 3 2 1



No	P/N	K-BO	ОПИСАНИЕ
A1	305521901	1	АНАЛИЗАТОР 3050-OLV
F1	271081001	1	ПРЕДОХРАНИТЕЛЬ
P1	230539001	1	БЛОК ПИТАНИЯ 24 В
PV	271346001	1	СОЛЕНОИДНЫЙ КЛАПАН
TS	305629901	1	ТЕРМОПРЕДОХРАНИТЕЛЬ

A		ORIGINAL ISSUE/AS BUILT		02/27/07	JMS
REV	DESCRIPTION	DATE	DRAWN		
<small>WARNING: ANY DEVIATION FROM THE RECOMMENDED INSTALLATION PRACTICES SHOWN ON THIS SALES ORDER MUST BE APPROVED IN WRITING BY AMETEK P&amp;AI DIVISION. SUCH DEVIATION MAY VOID SYSTEMS WARRANTY.</small>					
DRAWN:	JMS	02/27/07	AMETEK		
APPROVED:	JJH	02/28/07	PROCESS & ANALYTICAL INSTRUMENTS DIV.		
APPROVED:	NYS	02/28/07	NEWARK, DE 19702		
P.O.: D3004-AS-35-GPR/06					
J.O.: 141951					
S/N: 305B800					
TAG: N/A					
SCALE: NONE			SHEET: 1 OF 1		
<input checked="" type="checkbox"/> FOR INFORMATION <input type="checkbox"/> FOR APPROVAL <input type="checkbox"/> FINAL "AS-BUILT"		PRODUCT LINE	SIZE	DRAWING NO.	REV.
		MOISTURE	A3	141951-5	A
FILE NAME: 141951-5.DWG					

4 3 2 1