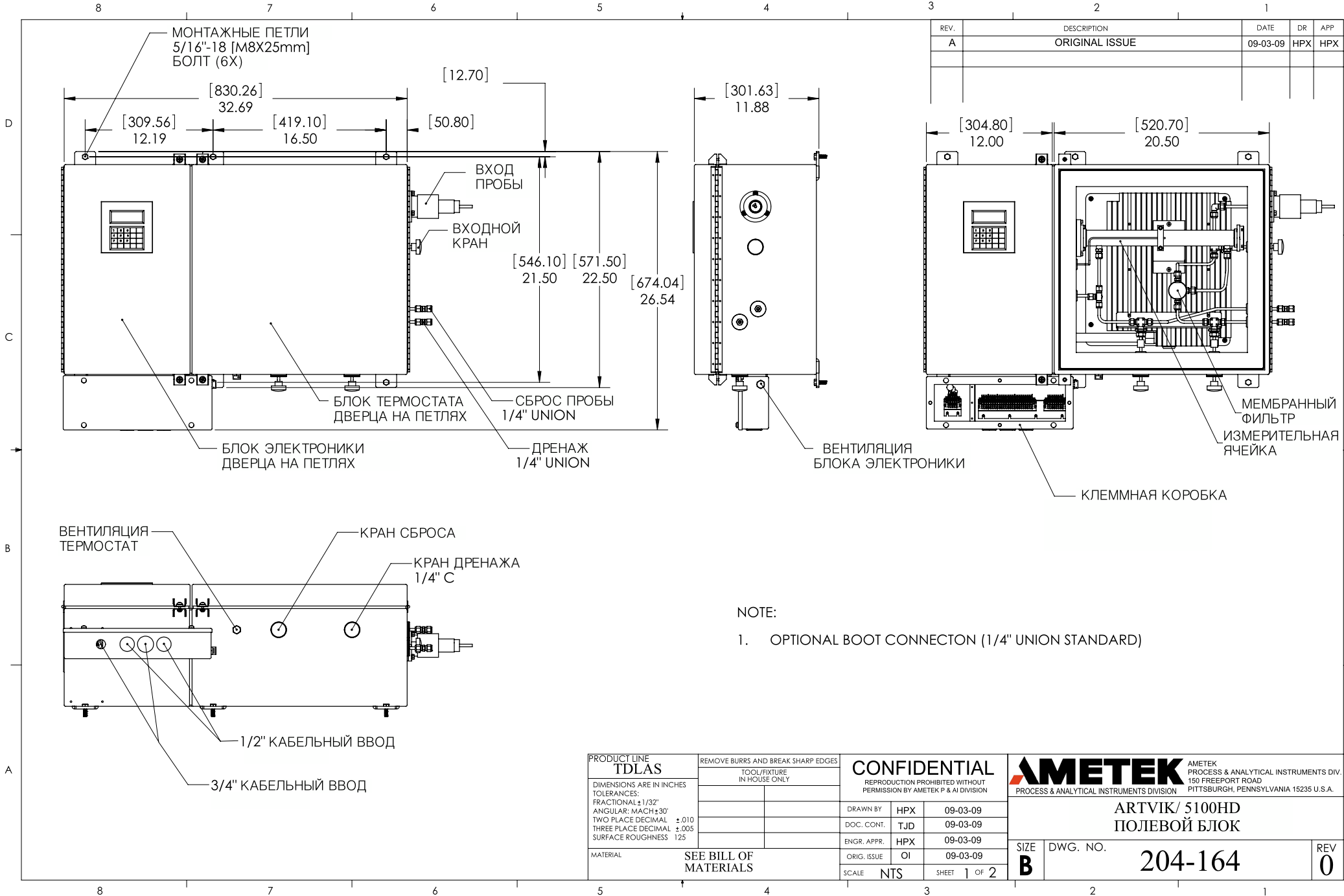


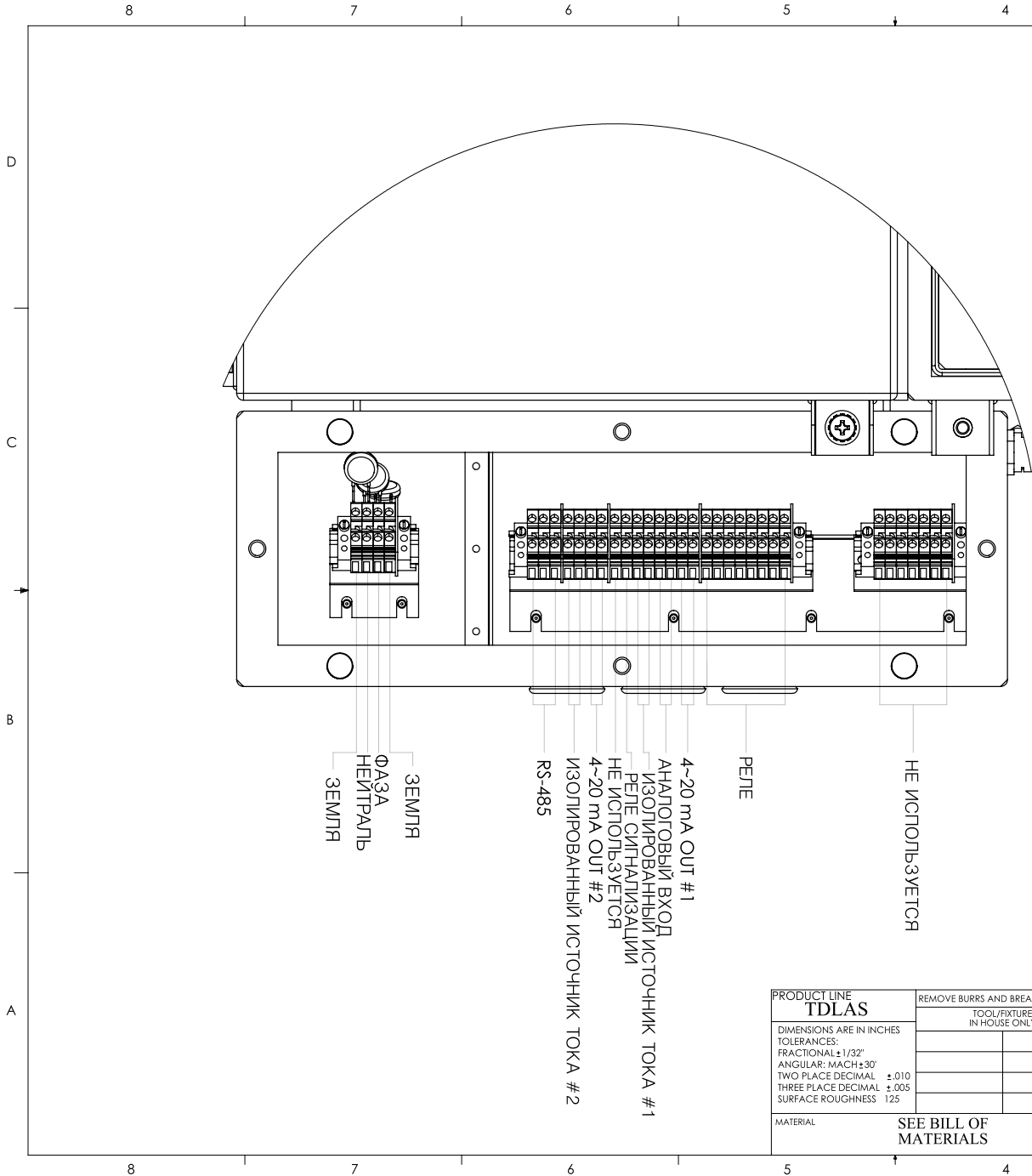
REV.	DESCRIPTION	DATE	DR	APP
A	ORIGINAL ISSUE	09-03-09	HPX	HPX



NOTE:
1. OPTIONAL BOOT CONNECTOR (1/4" UNION STANDARD)

PRODUCT LINE TDLAS	REMOVE BURRS AND BREAK SHARP EDGES TOOL/FIXTURE IN HOUSE ONLY	CONFIDENTIAL REPRODUCTION PROHIBITED WITHOUT PERMISSION BY AMETEK P & AI DIVISION	AMETEK PROCESS & ANALYTICAL INSTRUMENTS DIV. 150 FREEPORT ROAD PITTSBURGH, PENNSYLVANIA 15235 U.S.A.
DIMENSIONS ARE IN INCHES TOLERANCES: FRACTIONAL ± 1/32" ANGULAR: MACH ± 30' TWO PLACE DECIMAL ± .010 THREE PLACE DECIMAL ± .005 SURFACE ROUGHNESS 125		DRAWN BY: HPX 09-03-09 DOC. CONT: TJD 09-03-09 ENGR. APPR: HPX 09-03-09 ORIG. ISSUE: OI 09-03-09 SCALE: NTS SHEET 1 OF 2	
MATERIAL	SEE BILL OF MATERIALS		ARTVIK/ 5100HD ПОЛЕВОЙ БЛОК SIZE B DWG. NO. 204-164 REV 0

REV.	DESCRIPTION	DATE	DR	APP
A	ORIGINAL ISSUE	09-03-09	HPX	HPX



ЗЕМЛЯ
 ФАЗА
 НЕИТРАЛЬ
 ЗЕМЛЯ
 RS-485
 ИЗОЛИРОВАННЫЙ ИСТОЧНИК ТОКА #2
 ПЕНЕ
 АНАЛОГОВЫЙ ВХОД
 ИЗОЛИРОВАННЫЙ ИСТОЧНИК ТОКА #1
 ПЕНЕ СИГНАЛИЗАЦИИ
 HE ИСПОЛЬЗУЕТСЯ
 HE ИСПОЛЬЗУЕТСЯ

PRODUCT LINE TDLAS		REMOVE BURRS AND BREAK SHARP EDGES TOOL/FIXTURE IN HOUSE ONLY		CONFIDENTIAL REPRODUCTION PROHIBITED WITHOUT PERMISSION BY AMETEK P & AI DIVISION		AMETEK PROCESS & ANALYTICAL INSTRUMENTS DIV. 150 FREEPORT ROAD PITTSBURGH, PENNSYLVANIA 15235 U.S.A.		
DIMENSIONS ARE IN INCHES TOLERANCES: FRACTIONAL $\pm 1/32"$ ANGULAR: MACH $\pm 30'$ TWO PLACE DECIMAL $\pm .010$ THREE PLACE DECIMAL $\pm .005$ SURFACE ROUGHNESS 125		DRAWN BY: HPX 09-03-09 DOC. CONT: TJD 09-03-09 ENGR. APPR: HPX 09-03-09 ORIG. ISSUE: OI 09-03-09 SCALE: NTS SHEET 2 OF 2						
MATERIAL: SEE BILL OF MATERIALS		ARTVIK/ 5100HD СХЕМА ВНЕШНИХ ПОДКЛЮЧЕНИЙ				SIZE B	DWG. NO. 204-164	REV 0