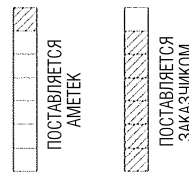


ОБЕСПЕЧИВАЕТ ЗАКАЗЧИК

- A1 ПОДАЧА ВОЗДУХА КИП 1- 10 PSIG ДЛЯ ПРОДУВКИ КОРПУСА
- G1 ПОСТАВКА И УСТАНОВКА БАЛЛОНА С НУЛЕВЫМ ГАЗОМ (СТАНДАРТНЫЙ БАЛЛОН НА 400 - 500 ДНЕЙ)
- SL1 МОНТАЖ ОБОГРЕВАЕМОЙ ЛИНИИ ПРОБЫ
- VL1 МОНТАЖ ЛИНИИ СБРОСА
- C1 МОНТАЖ СИГНАЛЬНОГО КАБЕЛЯ
- C2 МОНТАЖ КАБЕЛЯ РЕЛЕ
- V1 МОНТАЖ ЗОНДА С РЕГУЛЯТОРОМ ДАВЛЕНИЯ
- V2 МОНТАЖ ЗОНДА
- W1 МОНТАЖ ВВАРНОЙ БОБЫШКИ



ТРЕБОВАНИЯ К ЭЛЕКТРОПИТАНИЮ

- P1 ЭЛЕКТРОПИТАНИЕ 220 В, 50 Гц, 8А
- P2 ЭЛЕКТРОПИТАНИЕ 220 В, 50 Гц, ЛИНИЯ ПРОБЫ

- NOTE: 1. THE MAXIMUM SAMPLE DEWPOINT SHOULD BE AT LEAST 5°C BELOW THE MINIMUM AMBIENT TEMPERATURE. IF NOT, SAMPLE LINE HEAT TRACING MAY BE REQUIRED.
2. THE ENVIRONMENTAL PURGE KIT IS REQUIRED FOR HIGH HUMIDITY (>70%) APPLICATIONS.
3. ALWAYS MAINTAIN THE ENCLOSURE TEMPERATURE AT LEAST 5°C ABOVE THE MAXIMUM EXPECTED SAMPLE DEWPOINT TEMPERATURE.

SHELTER DESCRIPTION

- ENCLOSURE
- ALUMINUM
- FIBERGLASS
- SUPPLIED BY AMETEK
- SUPPLIED BY CUSTOMER

ANALYZER DESCRIPTION

- CENELEC ZONE 1, IIB, T3 (ATEX CERTIFIED) - KEMA No: 02ATEX2247

OPTIONS

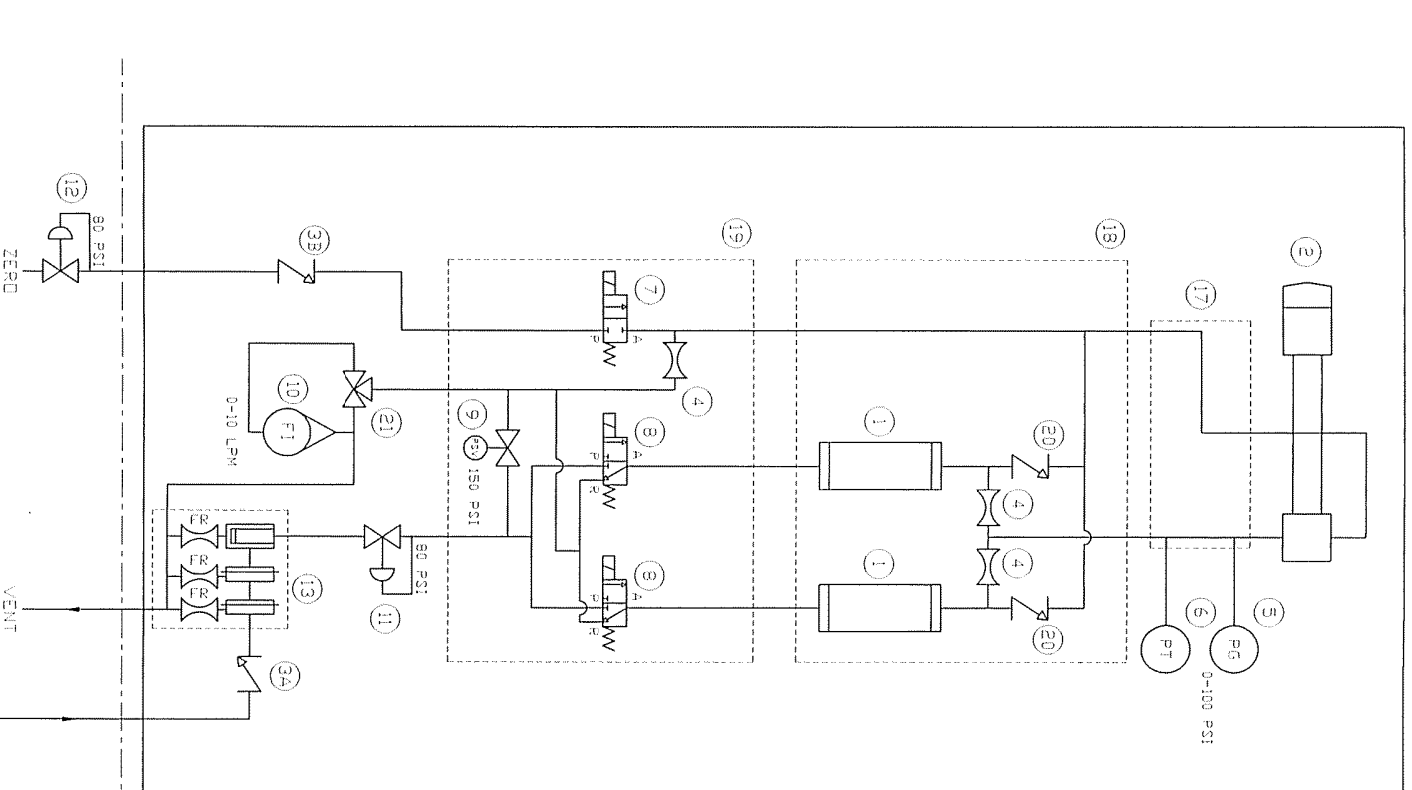
- STANDARD MEASURING CELL
- LOW RANGE MEASURING CELL
- ENVIRONMENTAL PURGE
- PRESSURE COMPENSATION

- X1 БЛОК ФИЛЬТРАЦИИ
- PTB КЛЕММНАЯ КОРОБКА ПОДКЛЮЧЕНИЯ ЭЛЕКТРОПИТАНИЯ
- HTR НАГРЕВАТЕЛЬ ШКАФА 500 В
- JB КЛЕММНАЯ КОРОБКА ЛИНИИ ПРОБЫ

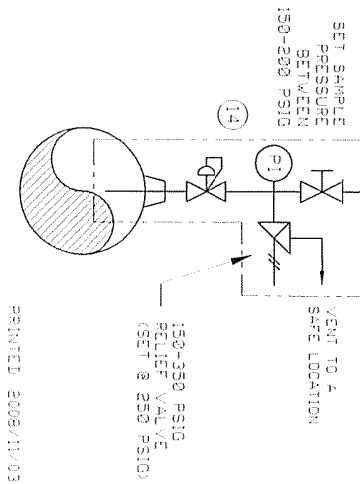
A	ORIGINAL ISSUE		08/11/03	DJI
REV	DESCRIPTION		DATE	DRAWN
WARNING: ANY DEVIATION FROM THE RECOMMENDED INSTALLATION PRACTICES SHOWN ON THIS SALES ORDER MUST BE APPROVED IN WRITING BY AMETEK P&AI DIVISION, SUCH DEVIATION MAY VOID SYSTEMS WARRANTY.				
DRAWN:	DJI	08/11/03		
APPROVED:	<i>[Signature]</i>	Nov 3/03		
Tag No:	N/A			
P.B. No:	1010331608			
SCALE:	NONE			
<input type="checkbox"/> FOR INFORMATION	PRODUCT LINE		SIZE	DRAWING NO.
<input checked="" type="checkbox"/> FOR APPROVAL	WESTERN RESEARCH		A	WX-10176-1-1
<input type="checkbox"/> FINAL "AS-BUILT"			REV.	A

AMETEK
PROCESS & ANALYTICAL INSTRUMENTS DIV.
2876 SUNRIDGE WAY N.E.
CALGARY, AB, CANADA T1Y 7H9

ARTVIK/ МОДЕЛЬ 933
БЛОК СХЕМА



- ПОДПИСИ
- 1 КОЛОЧКА
 - 2 РЪЧЕЙКА
 - 3А ОБРАТНЫЙ КЛАПАН (1/8" Т, 1 PSIG)
 - 3В ОБРАТНЫЙ КЛАПАН (1/4" Т, 1 PSIG)
 - 4 РЕСТРИКТОР
 - 5 МАНОМЕТР
 - 6 ДАТЧИК ДАВЛЕНИЯ
 - 7 СОЛЕНОИДНЫЙ КЛАПАН 2 ХОДОВЫЙ
 - 8 СОЛЕНОИДНЫЙ КЛАПАН 4 ХОДОВЫЙ
 - 9 ПРЕДОХРАНИТЕЛЬНЫЙ КЛАПАН
 - 10 ПОТАМЕТР
 - 11 РЕГУЛЯТОР ДАВЛЕНИЯ
 - 12 РЕГУЛЯТОР ДАВЛЕНИЯ ХУЛЕВОГО ГАЗА (УСТАНАВЛИВАЕТСЯ ЗАКАЗЧИКОМ)
 - 13 БЛОК ФИЛЬТРАЦИИ
 - 14 ЗОНД С РЕГУЛЯТОРОМ ДАВЛЕНИЯ (УСТАНАВЛИВАЕТСЯ ЗАКАЗЧИКОМ)
 - 15 ЛИНИЯ ПРОБЫ
 - 16 ОТСЕЧНОЙ КРАН
 - 17 УЗЕЛ ТЕПЛООБМЕННИКА
 - 18 БЛОК КОЛОНОК
 - 19 БЛОК СОЛЕНОИДОВ
 - 20 ОБРАТНЫЙ КЛАПАН
 - 21 3 ХОДОВЫЙ ОТСЕЧНОЙ КРАН



PRINTED: 2008/11/03

REV	DESCRIPTION	DATE	DRAWN
A		08/11/03	DJI

WARNING: ANY DEVIATION FROM THE RECOMMENDED INSTALLATION PROCEDURES SHOWN ON THIS SALES ORDER MUST BE APPROVED IN WRITING BY AMETEK R&I DIVISION, SUCH DEVIATION MAY VOID SYSTEMS WARRANTIES.

DRAWN: DJI
DATE: 08/11/03
APPROVED: *MS*
PRODUCT LINE: *Nov300*
Tog No: N/A
P.O. NO: 1010331808
SCALE: NONE
FOR INFORMATION:
FOR APPROVAL:
FINAL:

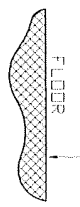
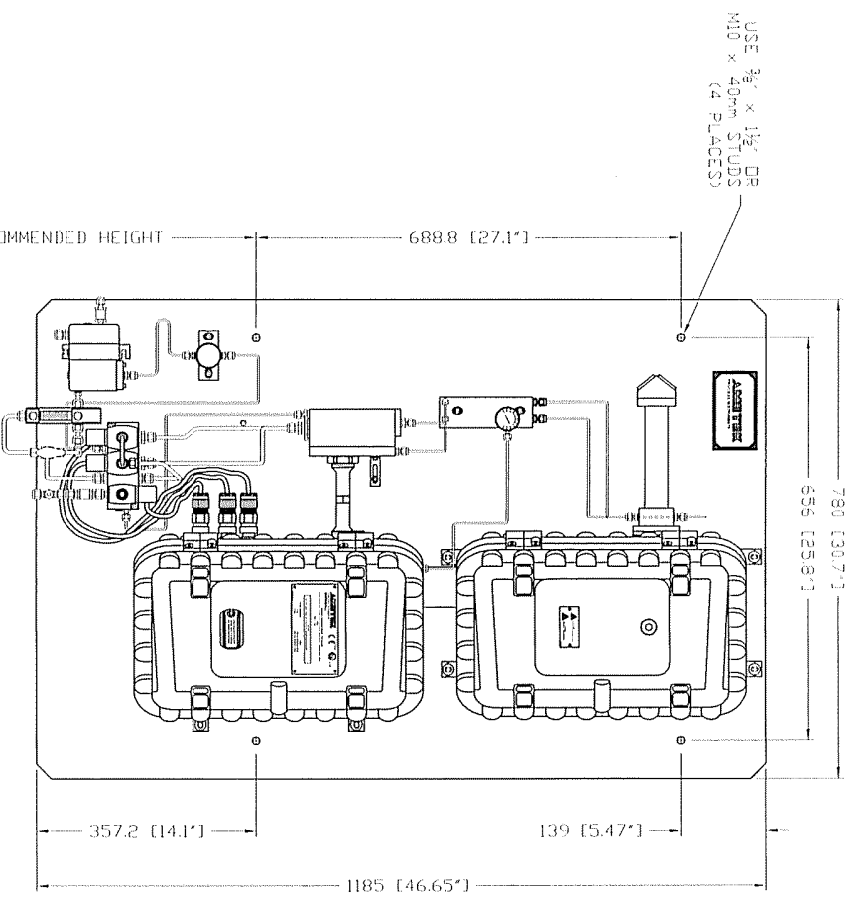
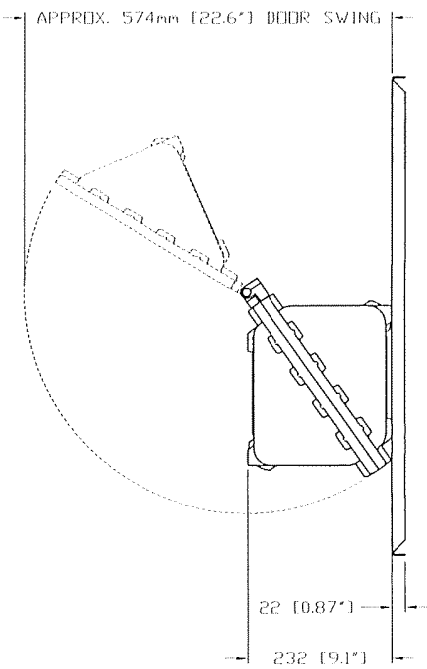
ORIGINAL ISSUE: 08/11/03

ARTVIK/ МОДЕЛЬ 933
ГАЗОВАЯ СХЕМА

AMETEK & ANALYTICAL INSTRUMENTS DIV.
8976 SUNSHINE WAY NE
CALDWAY, NJ, CANADA T1V 7H9

SIZE: 7/8" x 11" DRAWING NO: W-X-10176-1-2 REV: A

PRODUCT LINE: WESTERN RESEARCH

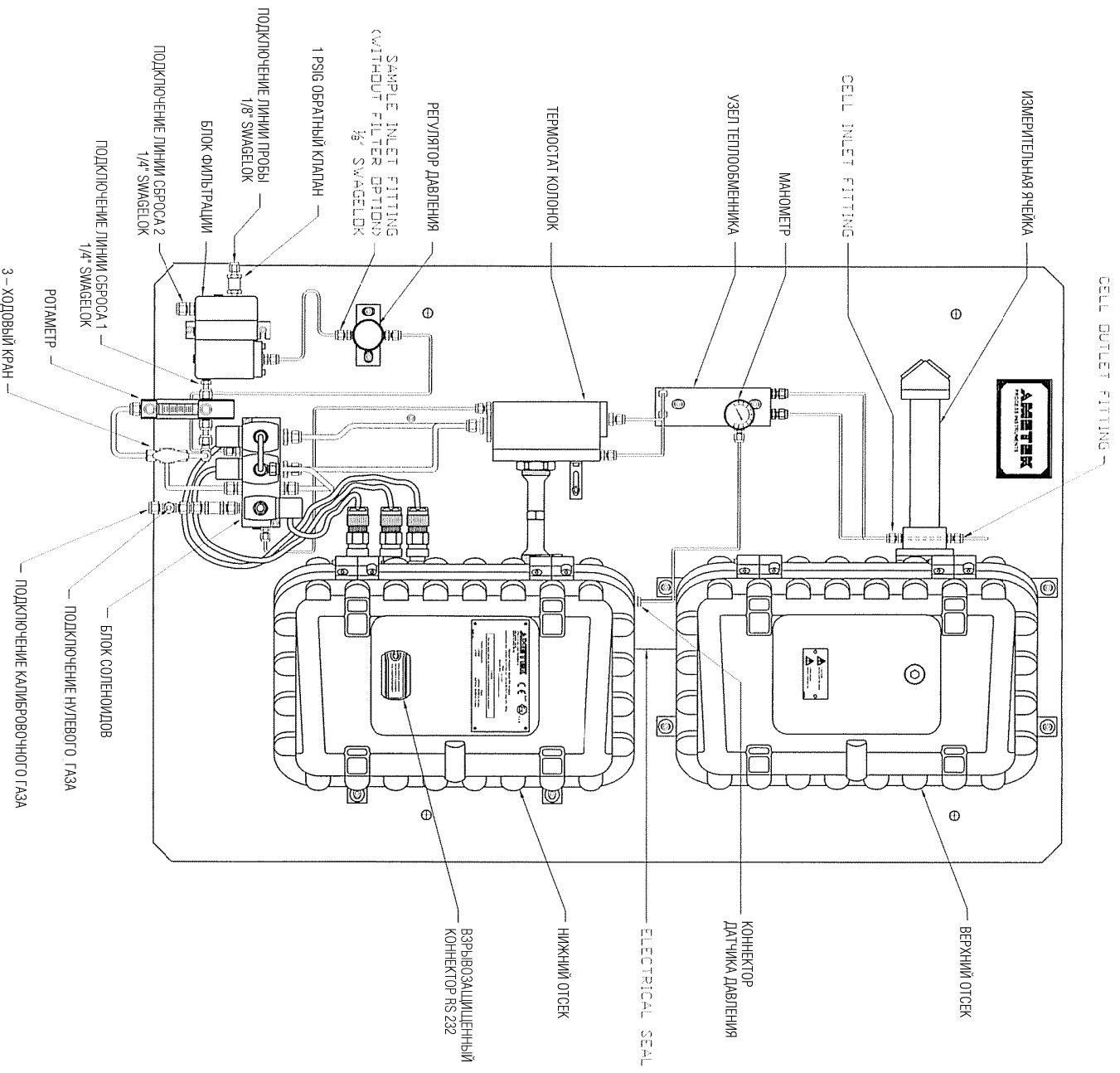


MAY NOT BE EXACTLY AS SHOWN

PRINTED: 2008/11/03

REV	A	DESCRIPTION	DATE	DRAWN
ORIGINAL ISSUE				
WARNING: ANY DEVIATION FROM THE RECOMMENDED INSTALLATION PRACTICES SHOWN ON THIS SALES ORDER MUST BE APPROVED IN WRITING BY ANATEK RESEARCH DIVISION. SUCH DEVIATION MAY VOID SYSTEMS WARRANTY.				
DRAWN	DJI	08/11/03		
APPROVED	<i>AS</i>	<i>KCS/BS</i>		
TAG NO: N/A		ARTVIK/ МОДЕЛЬ 933		
P.O. NO: 100031508		ПОПЕРОН БЛОК		
SCALE: NONE		PRODUCT LINE		
<input checked="" type="checkbox"/> FOR INFORMATION		WESTERN RESEARCH		
<input type="checkbox"/> FOR APPROVAL		SIZE		
<input type="checkbox"/> FINAL AS-BUILT		DRAWING NO		
		WX-10176-1-3		
		REV		
		A		

ANATEK
PROCESS & ANALYTICAL INSTRUMENTS DIV.
2875 SUNRISE WAY NE,
CALOVERT, AB, CANADA T1Y 7H9



REV	A	DATE	08/11/03	DRAWN	DJI
DESCRIPTION					
ORIGINAL ISSUE					
WARNING: ANY DEVIATION FROM THE RECOMMENDED INSTALLATION PRACTICES SHOWN ON THIS SALES ORDER MUST BE APPROVED IN WRITING BY AMETEK R&A DIVISION. SUCH DEVIATION MAY VOID SYSTEMS WARRANTY.					
DRAWN	DJI	08/11/03	APPROVED: <i>[Signature]</i>		
Tag No: N/A		P.O. No: 1010331608			
SCALE: NONE		PRODUCT LINE: WESTERN RESEARCH			
FOR INFORMATION		FOR APPROVAL			
FINAL AS-BUILT		SIZE: A			
DRAWING NO: W/X-10176-1-3A		REV: 7			

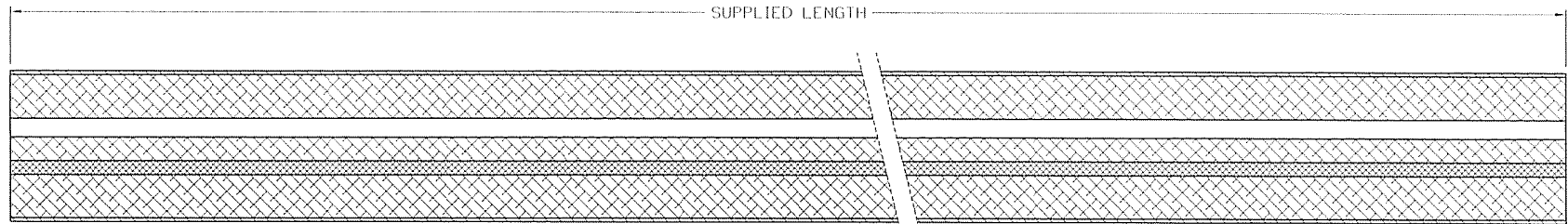
AMETEK
 PROCESS & ANALYTICAL INSTRUMENTS DIV.
 2876 SUNRISE WAY NE,
 CALGARY, AB, CANADA T1Y 7H9

AMETEK
 PROCESS & ANALYTICAL INSTRUMENTS DIV.
 2876 SUNRISE WAY NE,
 CALGARY, AB, CANADA T1Y 7H9

ARTVİK МОДЕЛЬ 933
СХЕМА ПОДКЛЮЧЕНИЯ

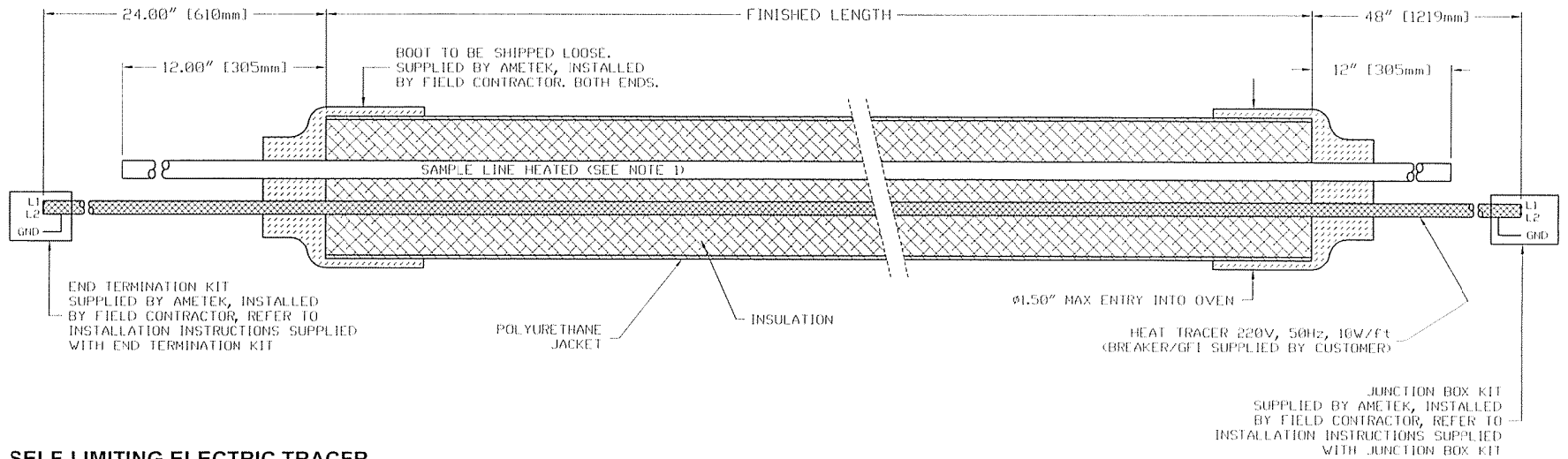
MAY NOT BE EXACTLY AS SHOWN

PRINTED 2008/11/03



SAMPLE END

ANALYZER END

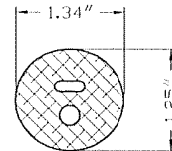


**SELF-LIMITING ELECTRIC TRACER
ATEX CERTIFIED FOR ZONE 1, GROUP IIA, IIB, T3**

CUSTOMER APPROVAL REQUIRED

SAMPLE LINE SUPPLIED LENGTH: 16.83 Meters
SAMPLE LINE FINISHED LENGTH: 15 Meters

TO BE CUT TO FIT EACH ANALYZER INSTALLATION.



END VIEW

SUPPLIED LENGTH:

OVERALL LENGTH OF SAMPLE LINE PROVIDED WITHOUT THE ENDS PREPARED FOR INSTALLATION.

FINISHED LENGTH:

THIS IS TO DEMONSTRATE HOW THE SAMPLE LINE WILL LOOK AFTER ENDS ARE PREPARED FOR INSTALLATION. DIMENSIONS OF END TUBES & HEAT TRACER MAY VARY ACCORDING TO INSTALLATION.

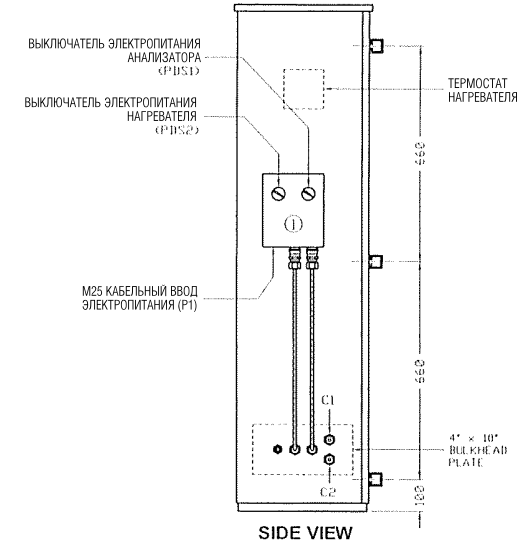
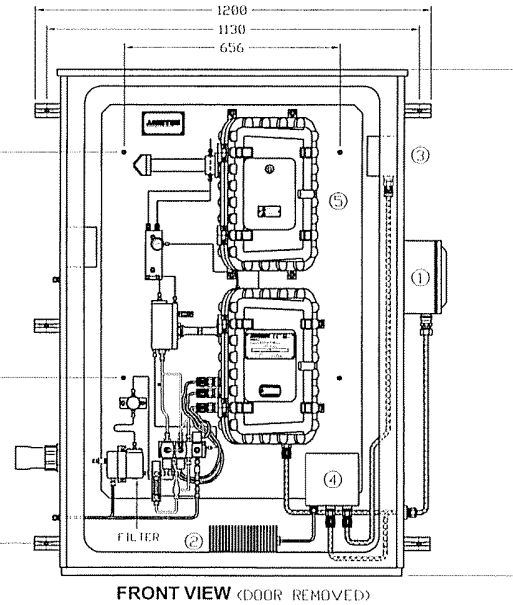
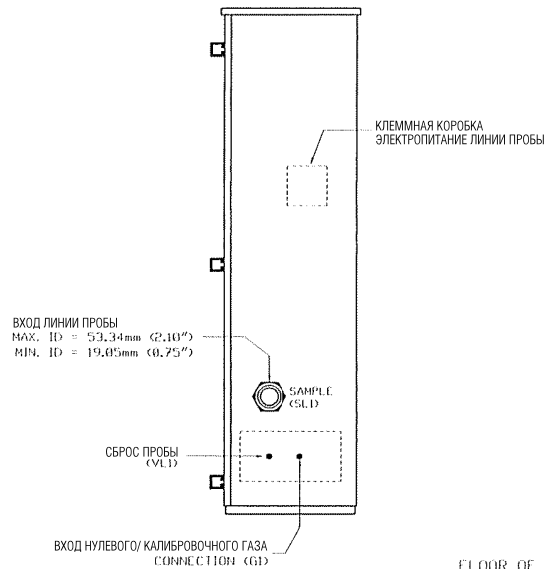
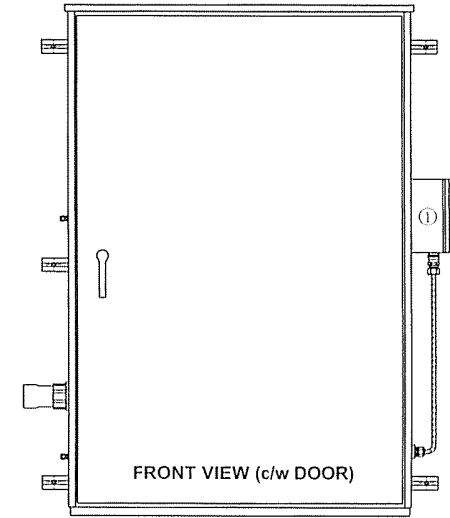
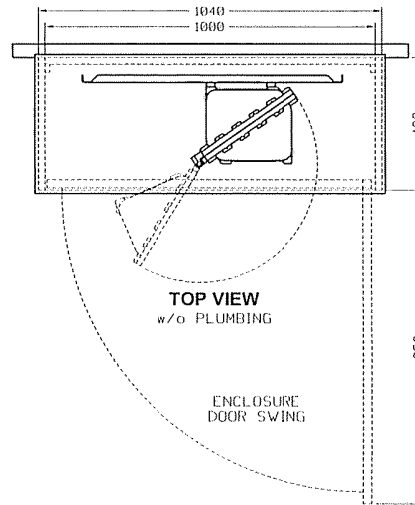
NOTES:

1. USE Ø1/4" 316 S.S. TUBING FOR SAMPLE LINE
2. MINIMUM BEND RADIUS IS 8"
3. DIMENSIONS: HEIGHT = 1.25" & WIDTH = 1.34"

A	ORIGINAL ISSUE		08/11/03	DJI
REV	DESCRIPTION		DATE	DRAWN
<p>WARNING: ANY DEVIATION FROM THE RECOMMENDED INSTALLATION PRACTICES SHOWN ON THIS SALES ORDER MUST BE APPROVED IN WRITING BY AMETEK PRAI DIVISION. SUCH DEVIATION MAY VOID SYSTEMS WARRANTY.</p>				
DRAWN:	DJI	08/11/03	<p>AMETEK PROCESS & ANALYTICAL INSTRUMENTS DIV. 2876 SUNRIDGE WAY NE. CALGARY, AB, CANADA T1Y 7H9</p>	
APPROVED:	<i>46</i>	<i>10/3/08</i>		
Tag No:	N/A			
P.O. No:	1010331608			
SCALE:	NONE			
<input type="checkbox"/> FOR INFORMATION	PRODUCT LINE		SIZE	DRAWING NO.
<input checked="" type="checkbox"/> FOR APPROVAL	WESTERN RESEARCH		A	WX-10176-1-5
<input type="checkbox"/> FINAL "AS-BUILT"			REV.	A

ARTVIK, INC. - MUBAREK GAS PROCESSING PLANT - UZBEKISTAN
MODEL 933 EURO ANALYZER ELECTRICALLY HEATED SAMPLE LINE DETAILS

- ① POWER DISTRIBUTION, SWITCH & FUSE BOX (CEEx de IIC, IP66)
- ② HEATER 500W/240V (CEEx dH IIC T4/T3)
- ③ THERMOSTAT (T/S) (CEEx d IIC T6)
- ④ JUNCTION BOX, HEATER T/S (CEEx e II T6)
- ⑤ MODEL 933 ON BACKPAN (CEEx d IIB T3)



ВХОД ЛИНИИ ПРОБЫ
MAX. ID = 53.34mm (2.10")
MIN. ID = 19.05mm (0.75")

сброс пробы (VLD)

ВХОД НУЛЕВОГО/КАЛИБРОВОЧНОГО ГАЗА
CONNECTION (G1)

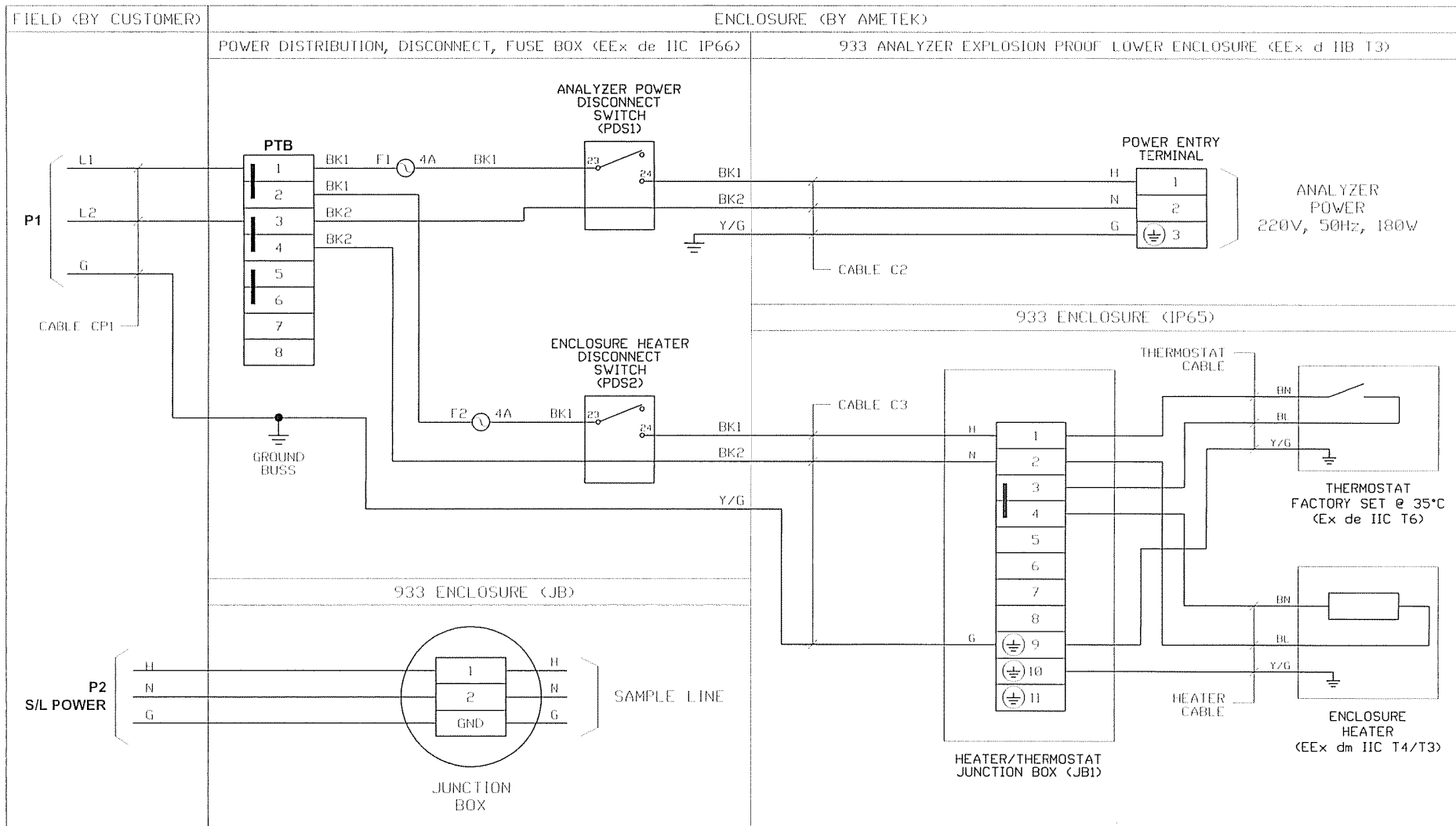
В-0-0 RECOMMENDED HEIGHT



C1 - ANALOG/DISCRETE SIGNAL CABLE ENTRY (M25 ENTRY)

A	ORIGINAL ISSUE		08/11/03	DJI
REV	DESCRIPTION		DATE	DRAWN
WARNING: ANY DEVIATION FROM THE RECOMMENDED INSTALLATION PRACTICES SHOWN ON THIS SALES ORDER MUST BE APPROVED IN WRITING BY AMETEK P&AI DIVISION, SUCH DEVIATION MAY VOID SYSTEMS WARRANTY.				
DRAWN:	DJI	08/11/03	AMETEK PROCESS & ANALYTICAL INSTRUMENTS DIV. 2876 SUNRIDGE WAY N.E. CALGARY, AB, CANADA T1Y 7H9	
APPROVED:	<i>[Signature]</i>	<i>[Signature]</i>		
Tag No:	N/A			
P.O. No:	1010331608			
SCALE:	NONE			
<input type="checkbox"/> FOR INFORMATION	PRODUCT LINE		SIZE	DRAWING NO.
<input checked="" type="checkbox"/> FOR APPROVAL	WESTERN RESEARCH		A	WX-10176-SI-1
<input type="checkbox"/> FINAL "AS-BUILT"				REV. A

ARTVIK/ МОДЕЛЬ 933
АНАЛИЗАТОР В ШКАФУ



NOTE 1: ALL WIRING IS 6mm² (H14AWG) UNLESS NOTED OTHERWISE.

- CP1 - 3 x 6mm² SUPPLIED BY CUSTOMER
- C2 - BRAIDED 3 x 2.5mm², O.D. = 12.5mm (301-0956) GLAND 301-0960
- C3 - BRAIDED 3 x 2.5mm², O.D. = 12.5mm (301-0956)

REV	DESCRIPTION	DATE	DRAWN
A	ORIGINAL ISSUE	08/11/03	DJI
<p>WARNING: ANY DEVIATION FROM THE RECOMMENDED INSTALLATION PRACTICES SHOWN ON THIS SALES ORDER MUST BE APPROVED IN WRITING BY AMETEK P&AI DIVISION, SUCH DEVIATION MAY VOID SYSTEMS WARRANTY.</p>			
DRAWN:	DJI	08/11/03	
APPROVED:			
Tag No:	N/A		
P.O. No:	1010331608		
SCALE:	NONE		
<input checked="" type="checkbox"/> FOR INFORMATION	PRODUCT LINE	SIZE	DRAWING NO.
<input type="checkbox"/> FOR APPROVAL	WESTERN RESEARCH	A	WX-10176-S1-2
<input type="checkbox"/> FINAL "AS-BUILT"			REV. A

AMETEK PROCESS & ANALYTICAL INSTRUMENTS DIV.
2876 SUNRIDGE WAY NE.
CALGARY, AB, CANADA T1Y 7H9

ARTVIK, INC. - MUBAREK GAS PROCESSING PLANT - UZBEKISTAN
MODEL 933 EURO ANALYZER ENCLOSURE POWER WIRING DETAILS